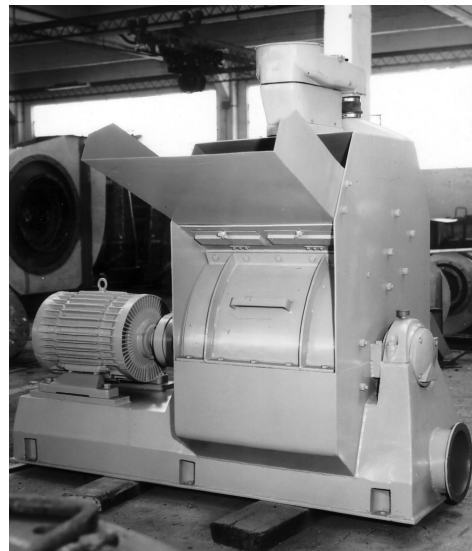


AGRIDELTA narrow hammer mills manufactured by GRUBER HERMANOS, S. A. are suitable for grinding processes fibrous products, soft or semi-hard, dry moderately non-sticky or greasy.

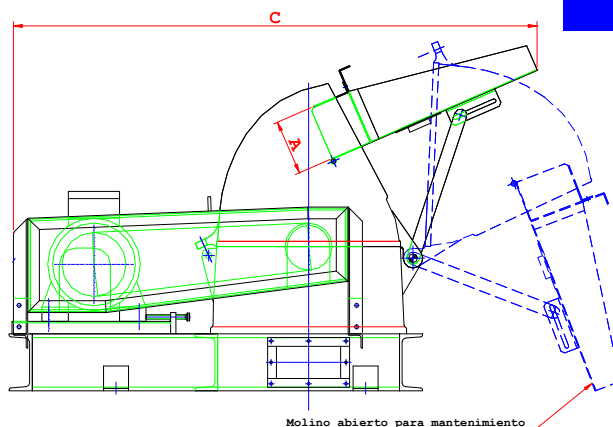
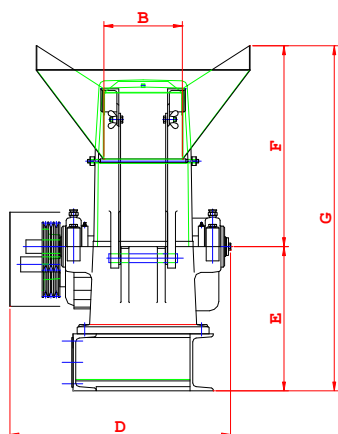
The AGRIDELTA mills grind also any finesse all the branches and leaves, such as ash and olive. Long products without cutting them before, as fodder, corn stalks and cobs with grain, alfalfa, grass, thistle, broom, straw, hay, hops, etc.. But it also gives an excellent performance in grinding of feed grains such as rye, barley, oats and beans, chestnuts, acorns and roots, bark of oak and pine, logs snuff, oyster shells, lime, wood chips, silkworm chrysalis, etc.

In the construction of the AGRIDELTA mills has been sought to provide maximum strength possible to the equipment: hammers made of materials highly resistant to wear and impact; linings cast iron wear resistant, large diameter hammer bolts; ultradimensional rotating shaft, etc.



AGRIDELTA Mill 6-A

Products successfully milled  
in AGRIDELTA mills:



Forage  
Corn  
Wheat  
Alfalfa  
Barley  
Rye  
Chestnuts  
Lima beans  
Root  
Oyster shells  
Lime  
Silkworm chrysalis  
Sizing  
Herbs  
Ammonium  
Sulfate  
Leather  
Cork  
Soap  
Kieselguhr  
Sawdust  
Zinc oxide  
Drugs  
Glue  
Paper  
Residues of dried  
fish  
Clay  
Asbestos  
Resins  
Urea  
Linoleum  
Algae  
Peel

TIPO	KW (HP)	A	B	C	D	E	F	G	CÁMARA DE MOLIENDA
AGRIDELTA 1-A	7,5 (10)	120	180	1 100	500	200	385	585	Ø335 x 195
AGRIDELTA 2-A	15 (20)	170	220	1 800	650	245	635	880	Ø415 x 217
AGRIDELTA 3-A	22 (30)	350	350	1 900	800	350	600	960	Ø530 x 495
AGRIDELTA 4-A	37 (50)	490	450	2 600	1 150	435	820	1 255	Ø680 x 458
AGRIDELTA 5-A	55 (75)	360	705	1 900	1 350	580	860	1 440	Ø680 x 600
AGRIDELTA 6-A	75 (100)	200	580	1 900	1 350	705	540	1 250	Ø780 x 480

\*Approximately Measurements in milimetres, under confirmation.

### GRUBER HERMANOS, S. A.

Workshops and Offices located in:  
Zumalacárregui, 30 - 48 903 Barakaldo - Vizcaya - SPAIN  
Teléfono +34 94 499 13 00  
Fax: +34 94 499 10 90  
[gruber@gruberhermanos.com](mailto:gruber@gruberhermanos.com)  
[www.gruberhermanos.com](http://www.gruberhermanos.com)

AGRIDELTA 1/6-1 en  
V.01.05

### How do they work

The material introduced into the mill is beaten by a set of hammers rotating at low speed. By this way, there is a first impact reduction. These hammers throw the material against the inside of the mill, where there are a series of impact plates, where the material is broken a second time for high speed. This process is repeated while the material is inside the mill.

When necessary, the mill is equipped with a series of grids or sieves to determine the maximum of the particle size after grinding. In step through rack last breakage occurs by shear.

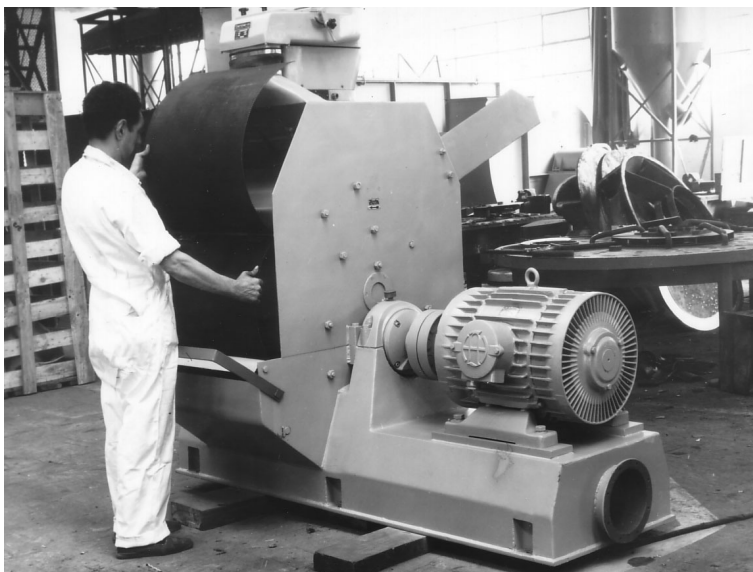


AGRIDELTA Mill 2-A

Grids or sieves can be easily removed from the mill body. The way as removed, allows quick discharged grinder in case of obstruction by power failure or unusual shutdown of the installation.

### PNEUMATIC CONVEYING

AGRIDELTA mills are available with separate installation of pneumatic conveying. These facilities work for depression with our recognised cyclone + fan groups. There is no limitation in height or distance for transporting the ground material into silos, barn, mixers, etc.



AGRIDELTA Mill 6-A.



**ATEX**

GRUBER HERMANOS, S. A. is able to build teams according to the standards of explosive atmospheres (ATEX). Directive 94/9/EC.

**GRUBER HERMANOS, S. A.** Technical-Sales Department is at your disposal to answer all your questions or queries you may have about the processes of mixing, providing your experience to find the solution that fits your needs.

### GRUBER HERMANOS, S. A.

Workshops and Offices located in::  
Zumalacárregui, 30 - 48 903 Barakaldo - Vizcaya - SPAIN  
Teléfono +34 94 499 13 00  
Fax: +34 94 499 10 90  
[gruber@gruberhermanos.com](mailto:gruber@gruberhermanos.com)  
[www.gruberhermanos.com](http://www.gruberhermanos.com)

AGRIDELTA 1/6-1 en  
V.01.05