

GRUBER HERMANOS high turbulence mixers are indicated to mix **quickly** all kind of dry powders, granulated materials and low density doughs.

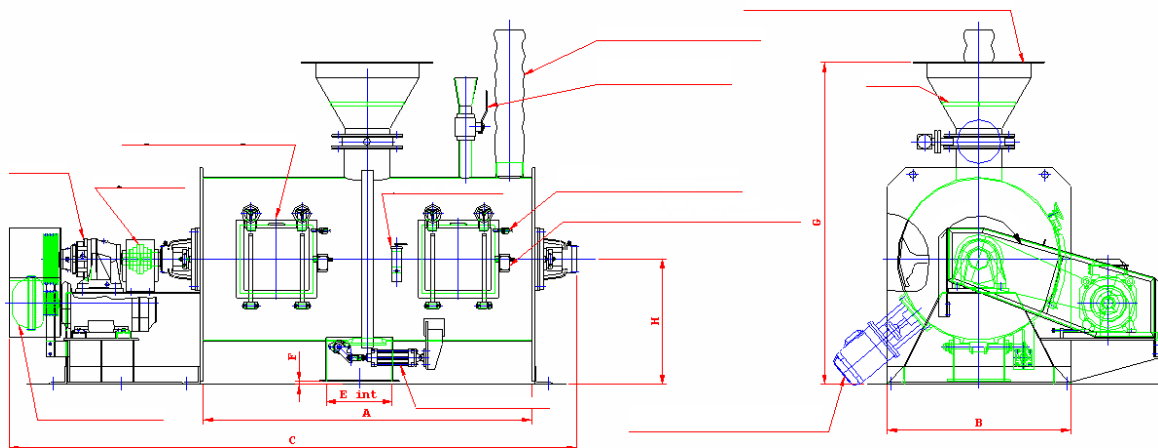
In these processes it is desired to achieve a perfect mix in the **shortest possible time** without producing particle splitting.

When designing the body and lids of our high turbulence mixers we have aimed to facilitate access to the interior of the machine in order to shorten the time employed in cleaning it.

Coupling this with a shaft of high torsional resistance, supported by roller bearings placed apart from the main body of the mixer, we obtain an equipment with a **very low incidence rate** and a **long operating life**.



Mixer MT-200 with 2000 l capacity, carbon steel construction.



TIPO	CAPACIDAD (litros)		RENDIMIENTO (litros/hora)		KW (HP)	A	B	C	E	F	G	H
	TOTAL	ÚTIL	MÍNIMO	MÁXIMO								
MT 60	600	200 – 420	3 000	6 300	7,5 – 18,5 (10 – 25)	1 300	1 100	2 350	450	20	1 700	750
MT 120	1 200	390 – 840	5 850	12 600	11 – 22 (15 – 30)	1 800	1 100	2 800	450	20	1 700	750
MT 200	2 000	660 – 1 400	9 900	21 000	15 – 30 (20 – 40)	2 200	1 300	4 000	450	20	2 100	850
MT 250	2 500	830 – 1 750	12 500	26 250	18,5 – 37 (25 – 50)	2 400	1 300	4 500	450	20	2 100	900
MT 300	3 000	990 – 2 100	14 480	31 500	37 – 55 (50 – 75)	3 200	1 300	4 900	450	70	1 600	950
MT 400	4 200	1 420 – 3 000	21 600	45 000	45 – 75 (60 – 100)	3 500	1 750	5 330	450	70	1 800	1 400
MT 600	6 100	1 980 – 4 200	29 700	63 000	55 – 90 (75 – 125)	4 000	1 900	6 350	450	70	2 000	1 550

*Approximate dimensions

** Please contact for other capacities

GRUBER HERMANOS, S. A.

Workshops and Offices located in:
Zumalacárregui, 30 - 48 903 Barakaldo - Vizcaya - SPAIN

Teléfono +34 94 499 13 00

Fax: +34 94 499 10 90

gruber@gruberhermanos.com

www.gruberhermanos.com

MT 60/600-5 en
V.01.06

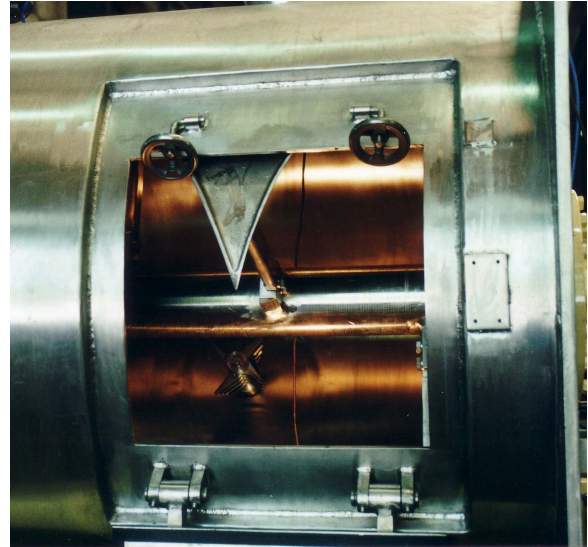
Operation principle

In these machines the mixing is achieved by means of a **high speed revolving** shaft, which is furnished with radial arms at whose ends **plough blade** shaped heads are fitted.

The plough blades induce a turbulent movement of **very high speed** surrounding the blades, thus producing a particle **dispersion** that generates the mixing.

The arrangement of the blades inside the machine practically **eliminates** the existence of **non affected zones** with not mixed material.

To account for products which tend to produce lumps or aggregates the mixer is fitted with special **dispersal groups**. These groups are composed by several rotary knives whose rotation axis is not associated with the axis of the main shaft. They **cut** the flow of material, producing an **even more intimate mixing**.



Detail of the rotor of the mixer, in stainless steel and with a heating cover



Plough blades manufactured in stainless steel, shining finish

Security is a very important issue in this field. **GRUBER HERMANOS** high turbulence mixers are **equipped with a double security system** that makes unfeasible for the operator to reach the interior of the machine while the motor is running.

Special versions:

- ✓ Cylindrical tight trough for mixing toxic or corrosive products
- ✓ Construcción reforzada para trabajos bajo presión o vacío
- ✓ Reinforced construction for works under pressure or vacuum
 - ✓ Heating or cooling jacket flow (liquid or vapour)
 - ✓ Inside mirror polished finishing
 - ✓ Dispersal mixing system
- ✓ Special designs upon request (acc. to drawings or specifications)

The comercial department of **GRUBER HERMANOS, S. A.** will answer you all your doubts regarding the different mixing precesses, giving it's experience in order to find a solution for your needs.

GRUBER HERMANOS, S. A.

Workshops and Offices located in:
 Zumalacárregui, 30 - 48 903 Barakaldo - Vizcaya - SPAIN
 Teléfono +34 94 499 13 00
 Fax: +34 94 499 10 90
gruber@gruberhermanos.com
www.gruberhermanos.com

MT 60/600-5 en
 V.01.06